

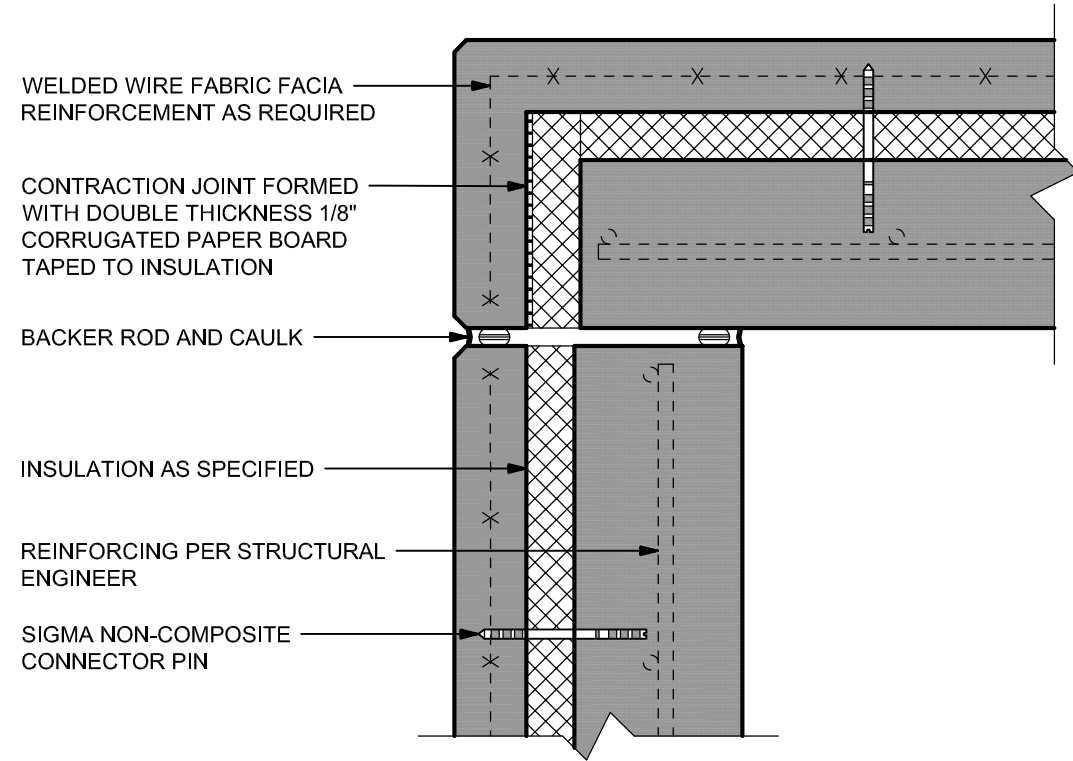
6/16/2017 2:38 PM

A
P102

EXT. CORNER - 90° BUTT JOINT

P102

1-1/2" = 1'-0"



WELDED WIRE FABRIC FACIA
REINFORCEMENT AS REQUIRED

CONTRACTION JOINT FORMED
WITH DOUBLE THICKNESS 1/8"
CORRUGATED PAPER BOARD
TAPED TO INSULATION

BACKER ROD AND CAULK

INSULATION AS SPECIFIED

REINFORCING PER STRUCTURAL
ENGINEER

SIGMA NON-COMPOSITE
CONNECTOR PIN

CONSTRUCTION DOCUMENTS
BASED ON DETAILS PROVIDED BY
SIGMA DC WILL VARY ACCORDING
TO PROJECT DEMANDS. REFER TO
THE PROJECT ARCHITECT OR
ENGINEER FOR SPECIFICATION
DETAILS. ANY REPRODUCTION OF
DETAILS IS THE LIABILITY OF THE
ENGINEER OF RECORD, IN WHICH
THEY WILL NEED TO VERIFY THAT
ALL COMPONENTS WORK FOR
THEIR SPECIFIC PROJECT.

SIGMA DG

5019 NW 127TH ST.
VANCOUVER, WASHINGTON 98685

STANDARD DETAILS

DATE APR, 2017

SCALE AS NOTED

PROJ. NO. 20170221

DRAWN JRN

CHECKED JCS

P102



VLMK
ENGINEERING + DESIGN

3933 SW Kelly Avenue
Portland, Oregon 97239
503.222.4453
VLMK.COM